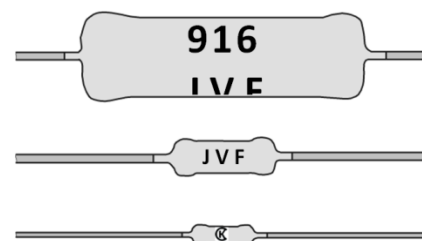


FEATURES

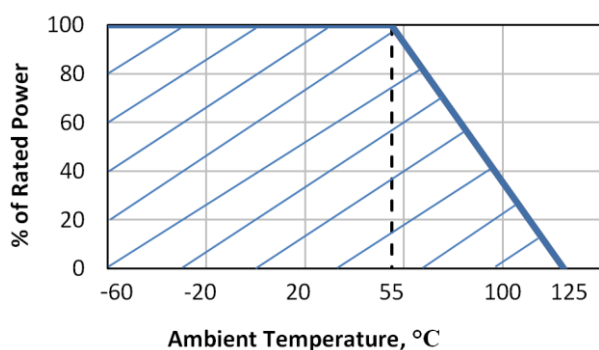
- Resistance value to 1 GΩ
- 10000 V capability



GENERAL SPECIFICATIONS

- **Operating Temp. Range:** -60 °C to 125 °C
- **Load Life 55 °C/ 1000 h:** 5 %
- **Max. Resistance Change at Rated Dissipation $|\Delta R/R \text{ max.}|$ after 15000 h:** 15 %
- **Package:** Leaded
- **Process:** Metal Film
- **Substrate Material:** 85 % Al₂O₃
- **Coating:** Enamel
- **Termination Finish:** Sn-Pb

Part Number	Size	Power (W)	Resistance Value, E24 Series (Ohms)	Resistance Tolerance (± %)	Max. Operating Voltage (V)	Temperature Coefficient (ppm/°C)
R1-125-0125	0207	0.125	1M-68M 75M-1G	10, 5	200	±1000 ±4000
R1-125-0250	0411	0.25	1M-100M 110M-1G	10, 5	1000	±1000 ±2500
R1-125-0500	0411	0.5	1M-100M 110M-1G	10, 5	2500	±1000 ±2500
R1-125-1000	0928	1.0	470K-200M 220M-1G	10, 5	10000	±1000 ±2500



PART NUMBER CODE

R1-125

model

0125

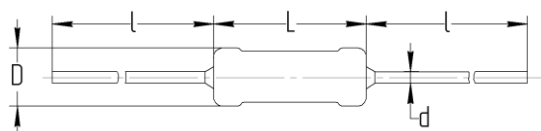
power
0125 = 0.125 W
0250 = 0.250 W
0500 = 0.5 W
1000 = 1 W

105

value
105 = 1 MΩ
108 = 1 GΩ

J

tolerance
J = 5 %
K = 10 %



Part Number	L	Dimensions (mm)			Mass (g)
		ØD	l	Ød	
R1-125-0125	6 _{-0.5}	2.2 _{-0.4}	16 ⁺⁴	0.6±0.1	0.15
R1-125-0250	10.8 _{-1.3}	4 _{-0.8}	25±5	0.8±0.1	0.8
R1-125-0500	10.8 _{-1.3}	4 _{-0.8}	25 ⁺⁵	0.8±0.1	0.8
R1-125-1000	28 _{-2.3}	8.6 _{-1.3}	25 ⁺⁵	0.8±0.1	4.5

PERFORMANCE CHARACTERISTICS

Test	Condition	ΔR max.
Robustness of termination	IEC60115-1 (4.16)/ IEC 60068-2-21 Bending; Tensile	± 5 %
Resistance to soldering heat	IEC60115-1 (4.18.2)/ IEC 60068-2-20 (260±5) °C; (10±1) s	± 5 %; no visible damage
Rapid change of temperature	IEC60115-1 (4.19)/ IEC 60068-2-14 30 min at -60 °C; 30 min at 125 °C; 5 cycles	(+5 ÷ -10) %
Vibration	IEC60115-1 (4.22)/ IEC 60068-2-6 80 sweep cycles per direction; 10 Hz to 600 Hz; 1 mm; 50 m/s ²	± 5 %
Low air pressure	IEC60115-1 (4.23.5)/ IEC 60068-2-13 0,67 kPa; 30 min; 15 °C to 35 °C	No visible damage
Damp heat, steady state	IEC60115-1 (4.24)/ IEC 60068-2-78 (40±2) °C; 21 days; (93±3) % RH	(+30 ÷ -15) %

All tests are carried out in accordance with the following specifications:

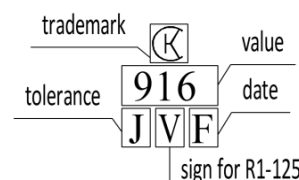
- IEC 60115-1 (clause),
- IEC 60068-2-xx (test method).

PACKAGING

Carton box.

MARKING

Nominal value (E24)	Marking
1 MΩ to 9.1 MΩ	105 to 915
10 MΩ to 91 MΩ	106 to 916
100 MΩ to 910 MΩ	107 to 917
1 GΩ	108



MOUNTING PROCEDURE

Can be used only in manual assembly techniques.

Date
2010 2011 2012 2013 2014 2015 2016 2017 2018 2019 2020 2021 2022 2023 2024 2025 2006 2027 2028 2029
A B C D E F H J K L M N P R S T U V W X